



Sizewell C Southern Transport Forum

Wednesday 4 March 2026

Agenda



Item 1: Welcome and Introduction of the Chair and Panel – *(Chair)*

Item 2: Meeting note and matters arising from Southern Transport Forum (Wednesday 3 December 2025) – *(Chair)*

Item 3: Road and Rail Updates – *(David Peacop, David Seal, Stephen Keighley and David Taylor)*

Item 4: Traffic Movements and Transport Review Group Update – *(Rebecca Quigg and Steve Merry)*

Item 5: Q&A – via Town and Parish Council Representative – *(Chair)*

Item 6: Dates of Future Meetings – *(Chair)*

Item 1: Welcome and Introductions

David Peacop

Site Operations Director

David Seal

Offsite Delivery Manager

Marjorie Barnes

Head of Regional External Affairs and Development

Richard Bull

Head of Planning

Richard Knight

Senior Community Relations Manager

Stephen Keighley

Rail Lead

Rebecca Quigg

Transport Co-Ordinator

David Taylor

Network Rail

Advisors

Zoe Botten

Community Relations Manager

Jez Porter

Stakeholder and External Roads Lead

Darren Benford-Brown

Community Safety Officer

Paul Kerry

Offsite Infrastructure Deputy Lead

Item 2: Meeting notes and matters arising from STF

3rd December 2025

Chair

Item 3: Road and Rail Update

David Peacop, David Seal,
Stephen Keighley, David Taylor

Friday Street Roundabout

Open to Traffic April 2026

- We remain on programme to have the Friday Street roundabout open to traffic for Monday morning, 30 March.
- Lighting, permanent signage, and temporary signage will all be in place for reopening.
- There will not be a contraflow.
- Temporary traffic management will remain in place to maintain a safe working environment for crews who will still be completing finishing works adjacent to the live carriageway.
- Additional comms will be issued to businesses, residents, and emergency services ahead of each weekend closure.



Yoxford Roundabout

Open to traffic April 2026

- We remain on track for the Yoxford roundabout to be open to traffic on 31 March.
- Key upcoming closures on the A12 to complete final surfacing and tie-in works will take place on the weekends of 8 May and 15 May.
- Lighting, signage, and road markings will be installed ahead of the reopening.



Friday Street A12 Road Closure Review

All diversion routes, signage schedules, and traffic management plans have been reviewed with Suffolk County Council and continually monitored throughout the closures.

Further signage will include:

“Single Track Road Unsuitable for Diversion” at Park Junction of Low Road and Benhall Street and Junction of Benhall Street and Deadmans Lane
“Businesses Open as Usual” signs for Leiston and Aldeburgh and Friday Street Café

Verges and Kerbs:

Our contractors have sent a road sweeper for Park Road and Mitford Road to clear mud and debris. Once the road closure works at Friday Street are fully complete, contractor will reinstate the verges with topsoil.

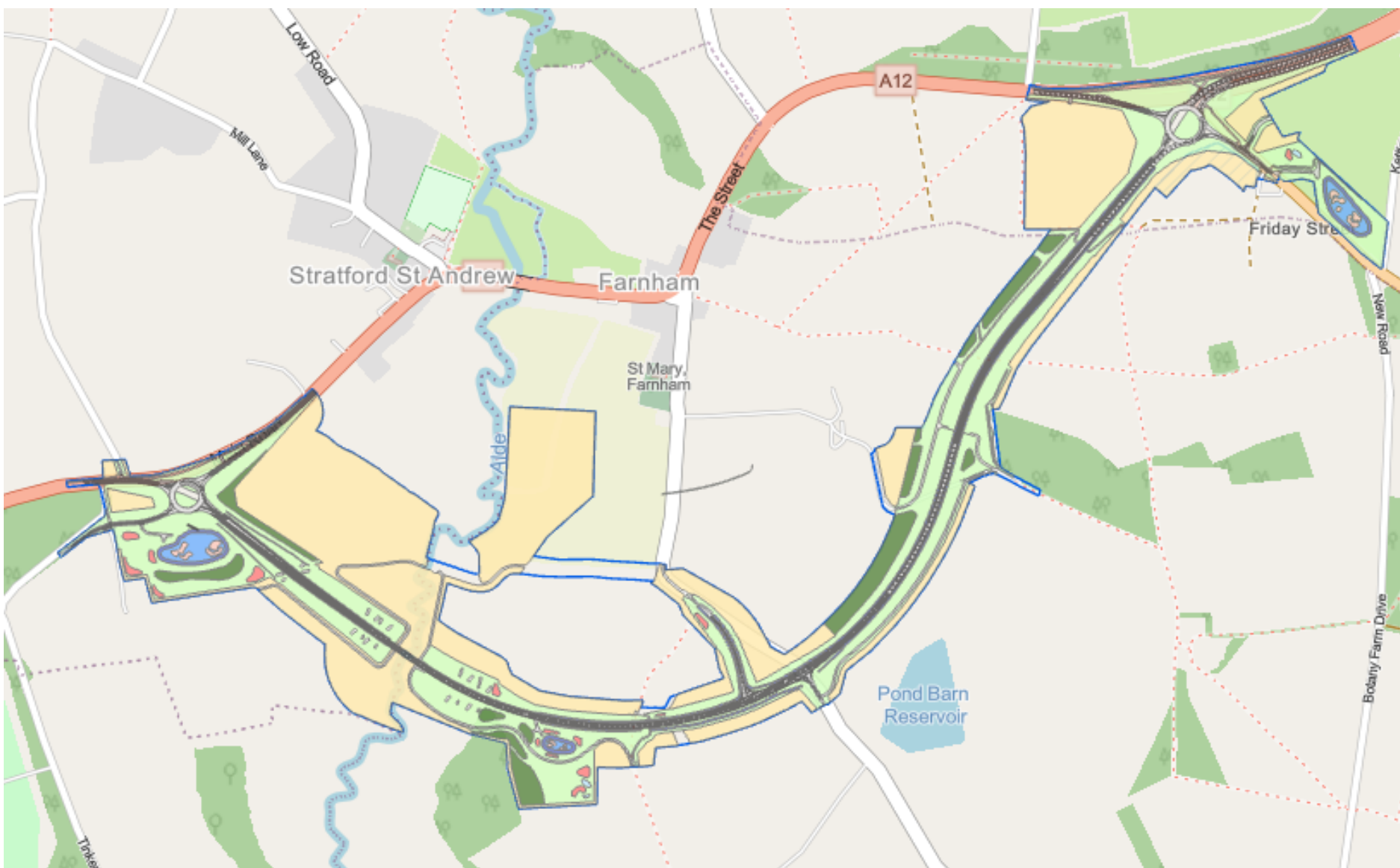
**DO NOT
FOLLOW
SAT NAV**

**BUSINESSES
OPEN AS
USUAL**

**PRIVATE ROAD
NO ACCESS
FOR GENERAL
TRAFFIC**

**SINGLE TRACK
ROAD
UNSUITABLE
FOR DIVERSION**

Two Village Bypass – Q1 2026



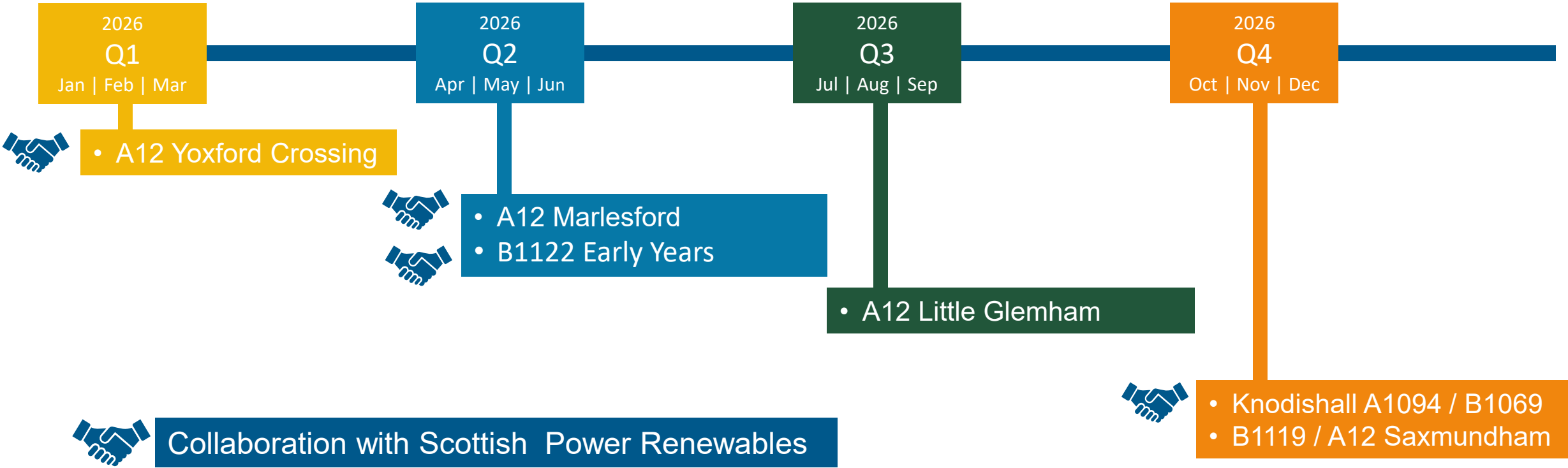
- Archaeology clearance works: the last remaining area has commenced at TVB Central.
- Utility diversion works ongoing (3 no. complete)
- Haul road from east to west nearing completion, Bailey bridge being installed at the River Alde to complete haul road connectivity.
- Piling platforms at the River Alde due to commence.
- Friday St works – see next slide

Two Village Bypass works compound

- Tinker Brook Compound: new compound access onto the A12 complete, site compound set up ongoing, site team mobilising to cabins.
- No traffic lights required
- Extended 30mph speed restriction will be removed.
- Revert back to 50mph



2026 Anticipated Commencement Dates

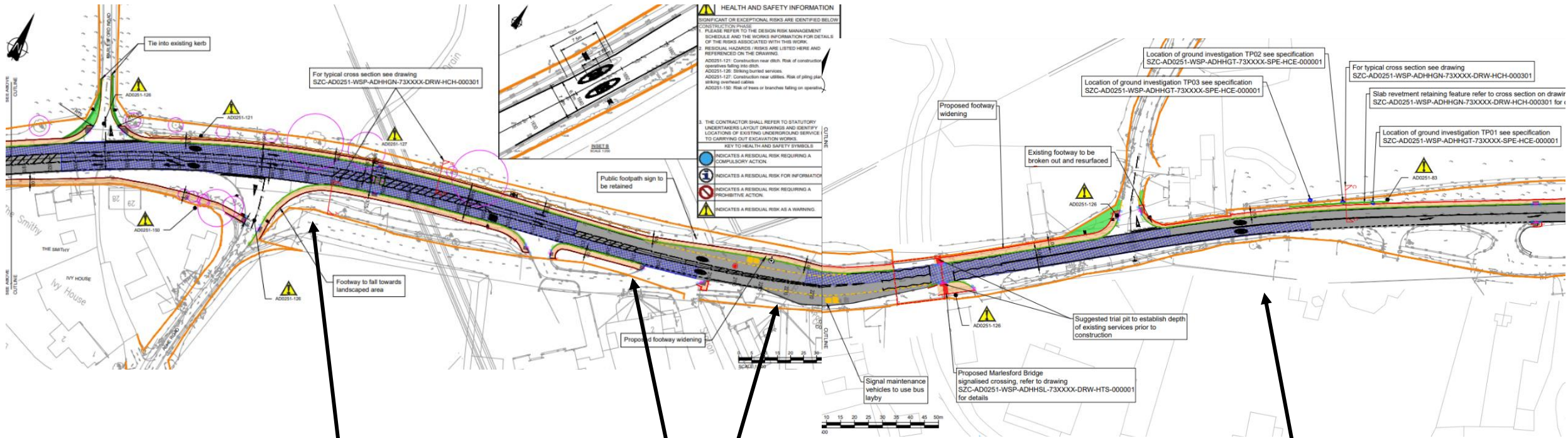


A12 Yoxford

- First of the new A12 signalised pedestrian crossing schemes.
- New footways and carriageway resurfacing.
- Delivery of Scottish Power Renewables scope to minimise overall disruption.



Local Roads: A12 Marlesford improvements

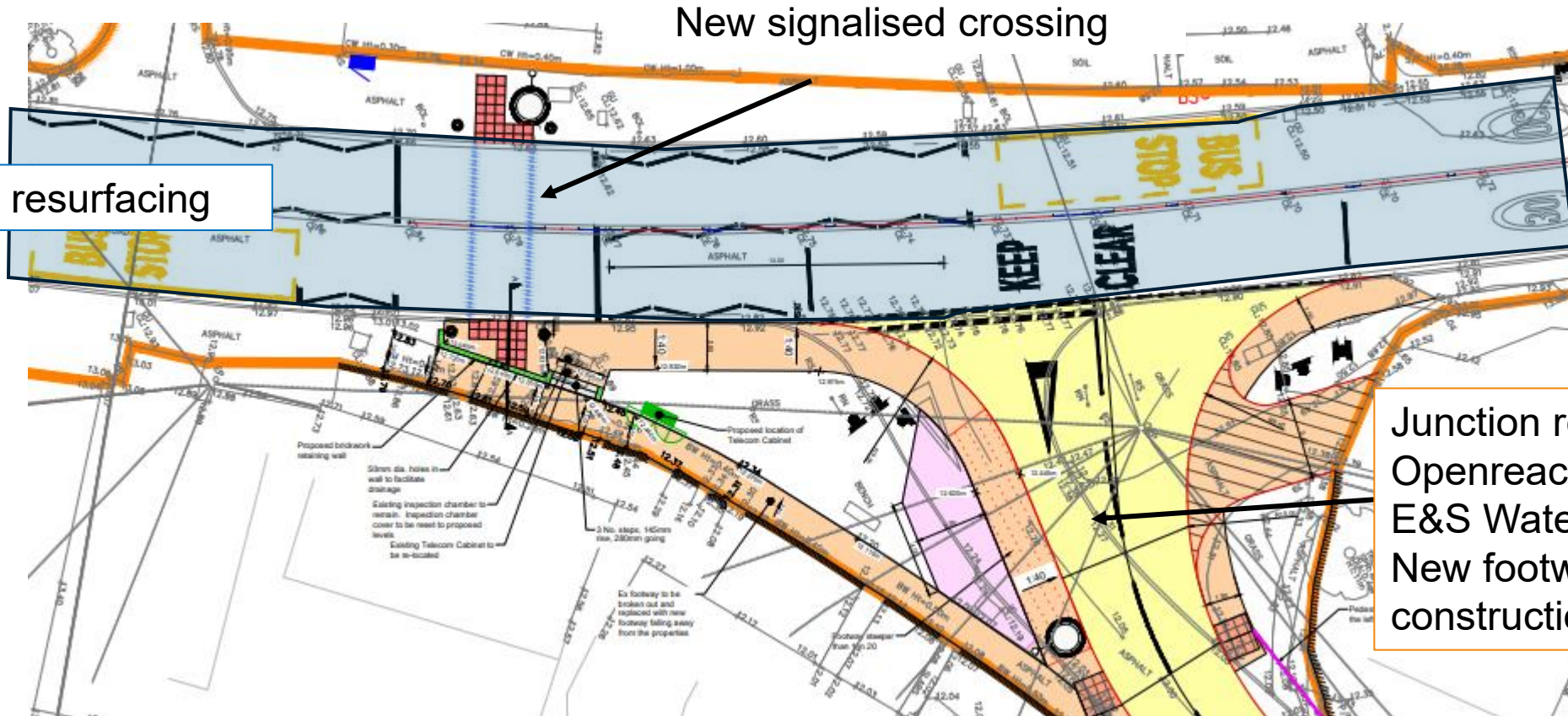


New footpath construction including Scottish Power Renewables scope.

New Thin Surface Course Asphalt throughout entire scheme.

New signalised pedestrian crossing and streetlighting.

Local Roads: A12 Improvements Little Glemham



Carriageway resurfacing

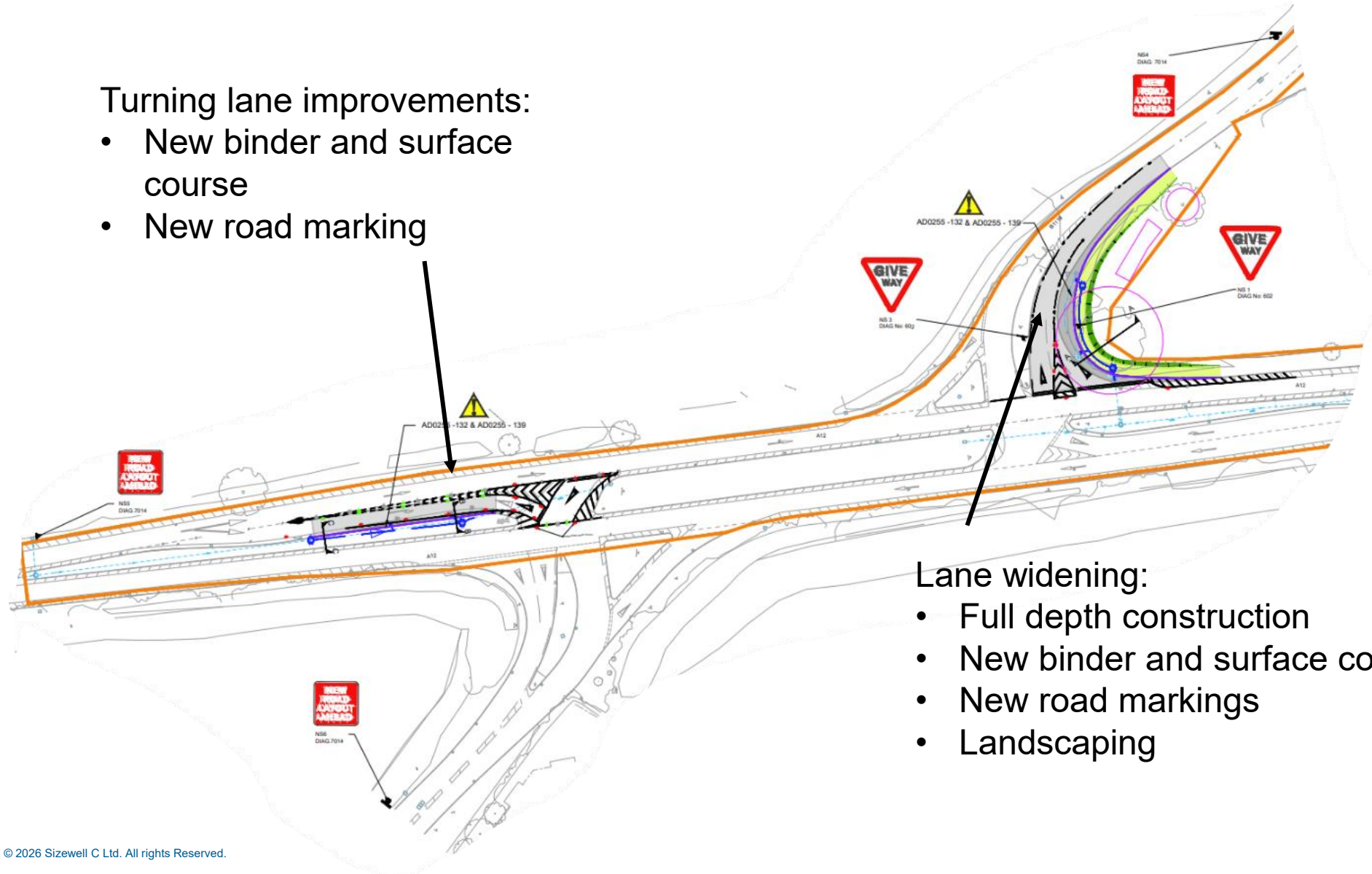
New signalised crossing

Junction realignment
Openreach diversion
E&S Water Diversion
New footway construction

Local Roads: A12 Improvements Saxmundham

Turning lane improvements:

- New binder and surface course
- New road marking



Lane widening:

- Full depth construction
- New binder and surface course
- New road markings
- Landscaping

Road Closures

March to April 2026

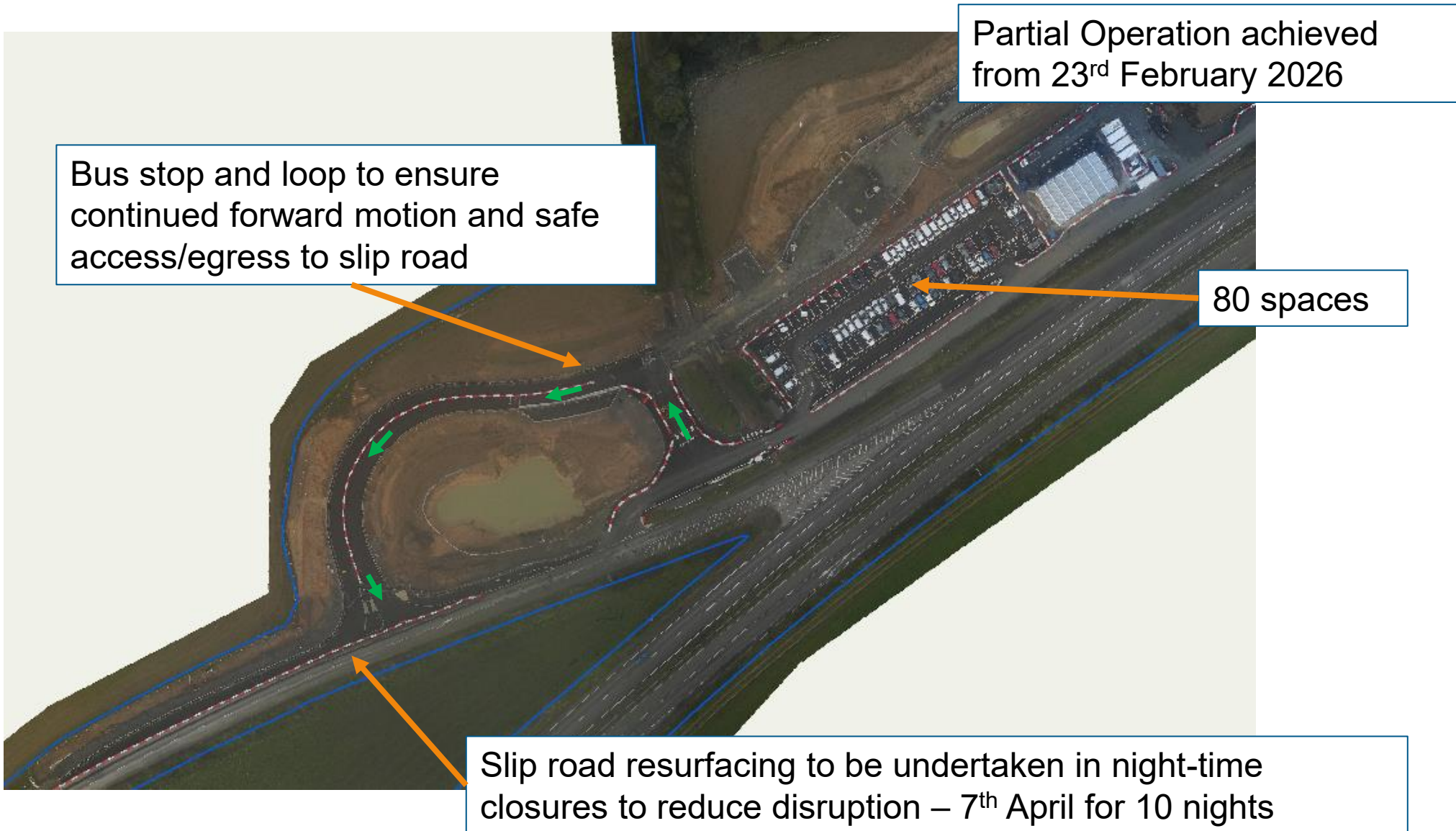
Dates	Location	Type of Closure	Scheme
Ongoing	Hill Farm Road, Farnham	Full Closure	Two Village Bypass
Ongoing to Summer 2026	Kettles Lane, Friday Street	Full Closure	Friday Street roundabout
3 to 6 March	A1094 Friday Street	Weeknight Closure (8pm to 5am)	Friday Street roundabout
6 to 9 March and 13 to 16 March	A1094 Friday Street	Full weekend Closure (8pm Fri to 5am Mon)	Friday Street roundabout
9 to 12, 16 to 19, 23 to 26 March	B1122 Middleton Road	Weeknight Closure (7pm to 5am)	Yoxford roundabout
20 to 23 March and 27 to 30 March	A12 and A1094 Friday Street	Full weekend Closure (8pm Fri to 5am Mon)	Friday Street roundabout
30 March to 16 April	B1078 on-slip Wickham Market	Weeknight Closure (8pm to 5am)	Southern Park and Ride
30 March to 2 April	B1122 Abbey Road	Weeknight Closure (8pm to 5am)	Main Development Site / Green Rail Route

Road Closures

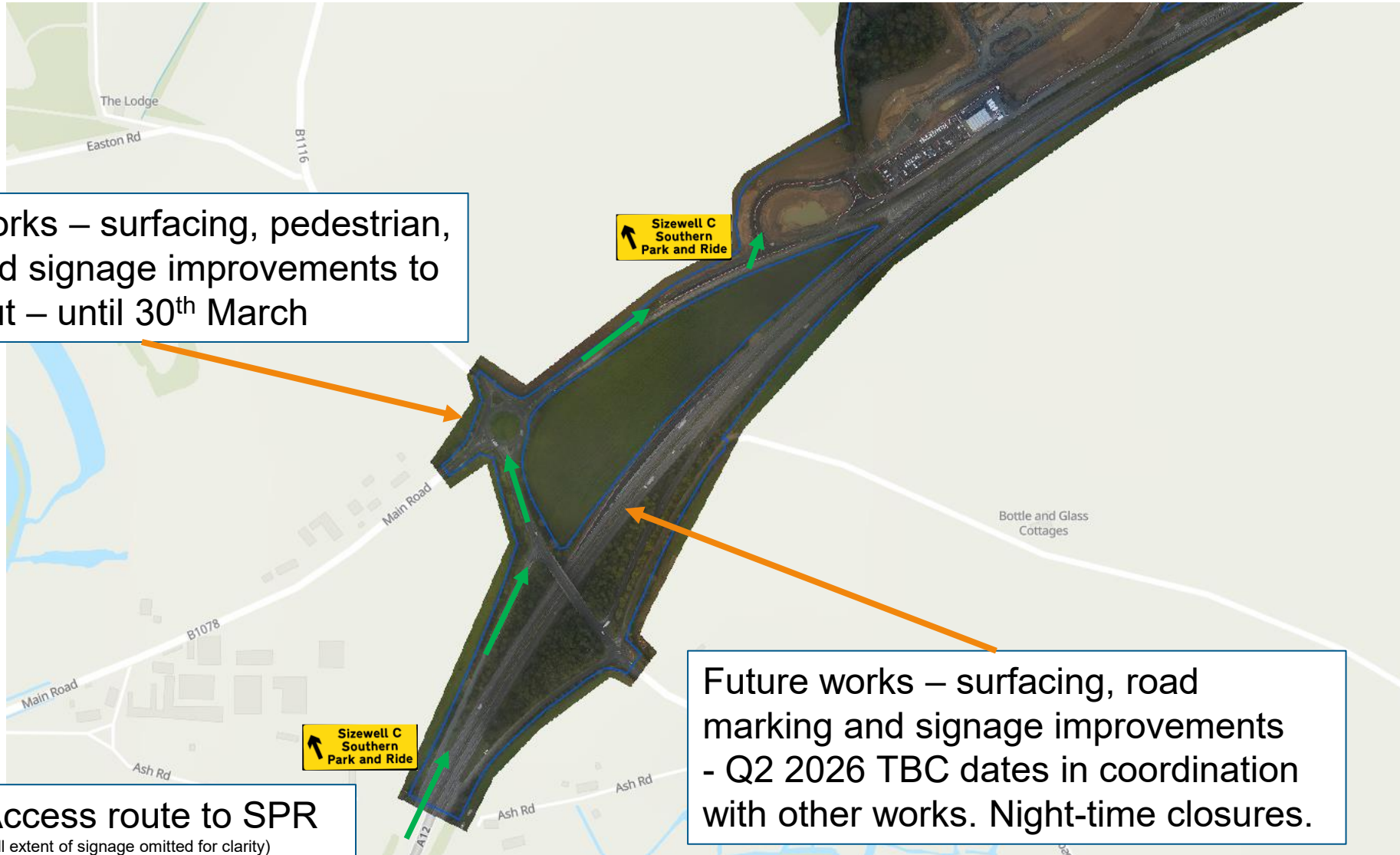
April to May 2026

Dates	Location	Type of Closure	Scheme
7 to 9 April	B1122 Abbey Road (TBC)	Weeknight Closure (8pm to 5am)	Main Development Site / Green Rail Route
10 to 13, 17 to 20, 24 to 27 April	B1122 Abbey Road (TBC)	Full weekend Closure (8pm Fri to 5am Mon)	Main Development Site / Green Rail Route
13 to 16 April	A12 Darsham	Weeknight Closure (8pm to 5am)	Northern Park and Ride
20 to 23 and 27 to 30 April	B1122 Middleton Moor (TBC)	Weeknight Closure (8pm to 5am)	B1122 Early Years
17 Apr to 3 May	A12 Wickham Market (Northbound) (TBC)	Night Closure (8pm to 5am)	Southern Park and Rode
5 May to 28 May	B1122 Middleton Moor/Theberton (TBC)	Weeknight Closure (8pm to 5am)	B1122 Early Years
7 to 11 and 14 to 18 May	A12 / B1122, Yoxford	Full weekend Closure (8pm Fri to 5am Mon)	Yoxford roundabout

Southern Park and Ride – partial operation



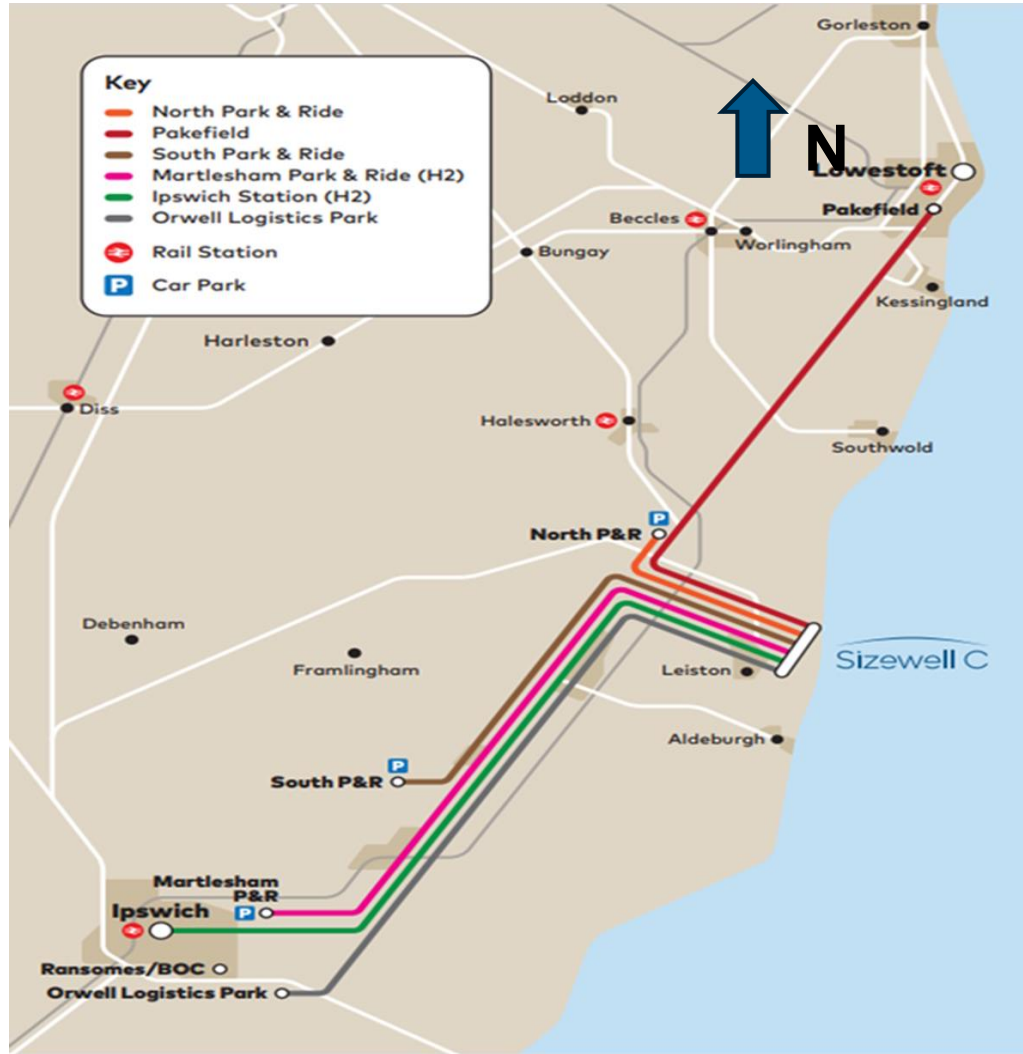
Southern Park and Ride – current works



Current works – surfacing, pedestrian, lighting and signage improvements to roundabout – until 30th March

Access route to SPR
(full extent of signage omitted for clarity)

Future works – surfacing, road marking and signage improvements - Q2 2026 TBC dates in coordination with other works. Night-time closures.



Passenger Services from

- Martlesham P&R
- Pakefield
- Orwell Logistics Park
- Ipswich Train Station
- Northern park and ride (Darsham)
- Southern park and ride (Wickham Market)
- Development of others is dependant on workforce location

Permission to increase bus movements

Park and Rides open to reduce car movements / on site parking

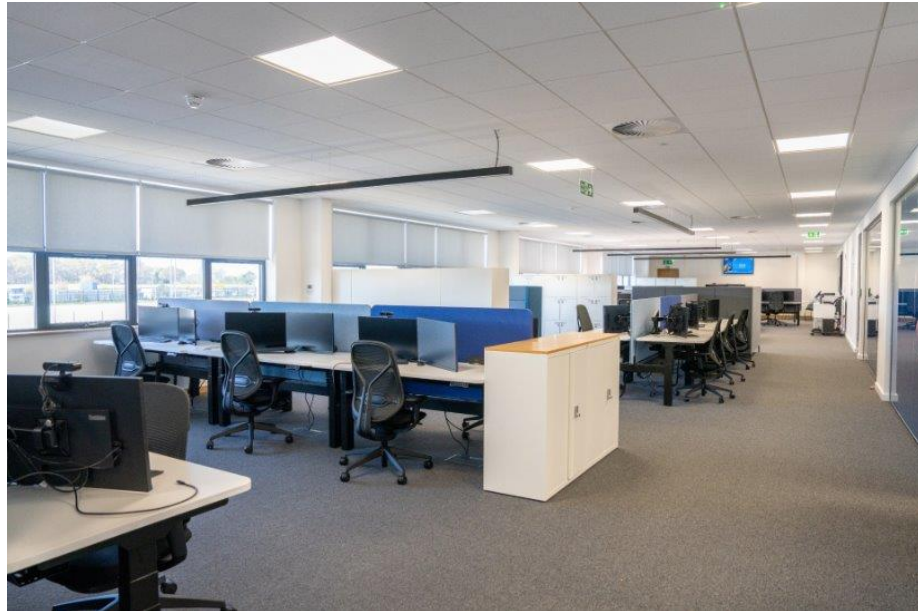
Reliable standard timetable of buses needed to transport workers to site

TRG agree to increase HDV limit by 29 vehicles per day to 329 HDVs to allow more buses to operate

This increase will not materially change the overall environmental effects of our HDVs

Governance documents will be updated to reflect this change

TRG will review 12 months from start of increased movements



Partial operation of both Park and Rides:
NPR 180 spaces. SPR first phased opening end of January.

Buses operating soon to take delivery of five new electric buses

300 desk spaces at Orwell Logistics Park, moving workforce to these offices for those who do not need to be in Leiston.

Orwell Park will also become default offices for external meetings

Rockford House now decommissioned. OSI staff re-located to Orwell

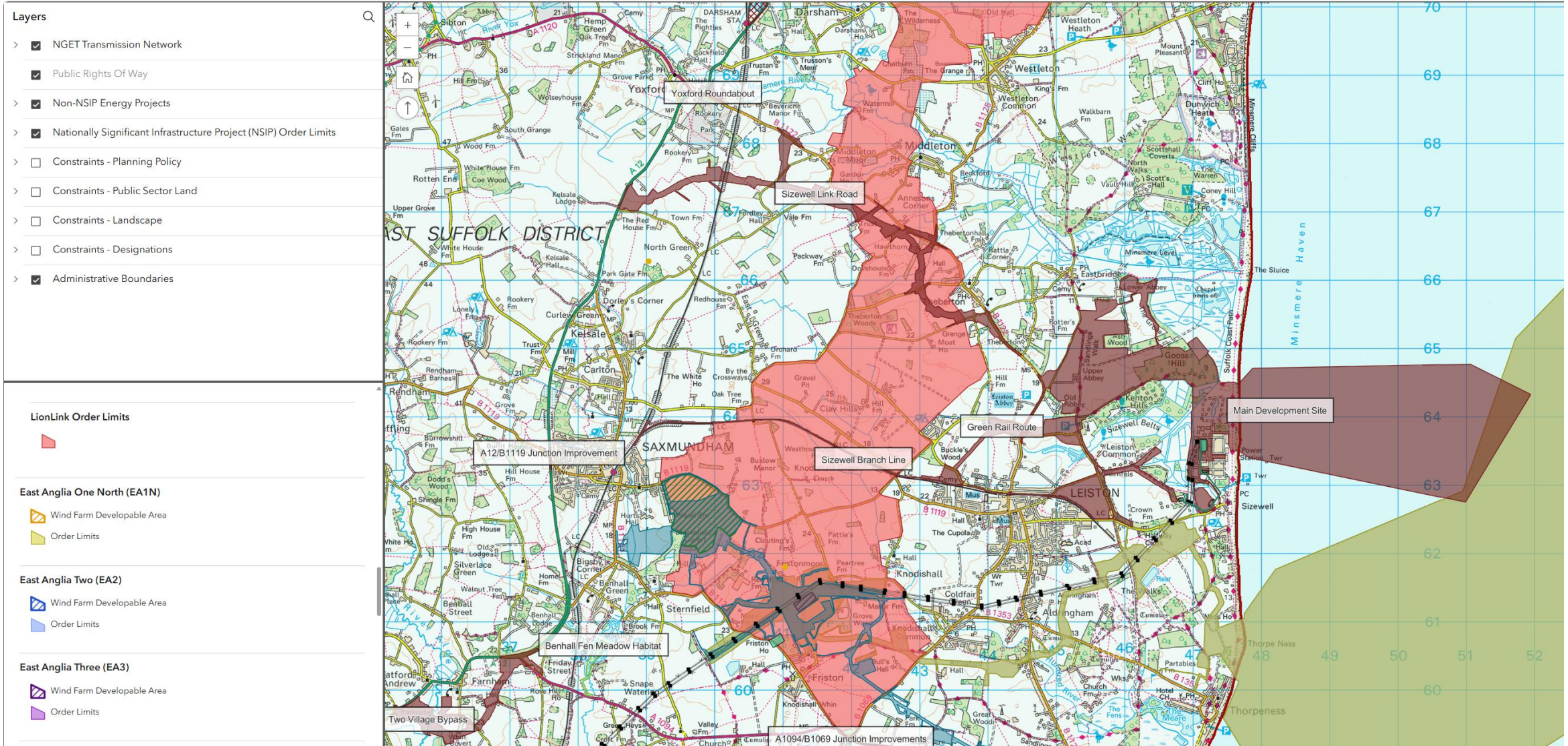
Strict criteria for visits to sites, bookings and transport arranged from transport hubs

Fly parking team now operational and supporting Darren

Vehicle Signage



Nationally Significant Infrastructure Projects (NSIP's)



Sizewell C and Scottish Power Collaboration Agreement

- Collaboration will reduce road congestion, save on costs, and minimise environmental impact
- Agreement demonstrates how major infrastructure projects can work together
- Agreed with Suffolk County Council and East Suffolk Council.

Projects include:

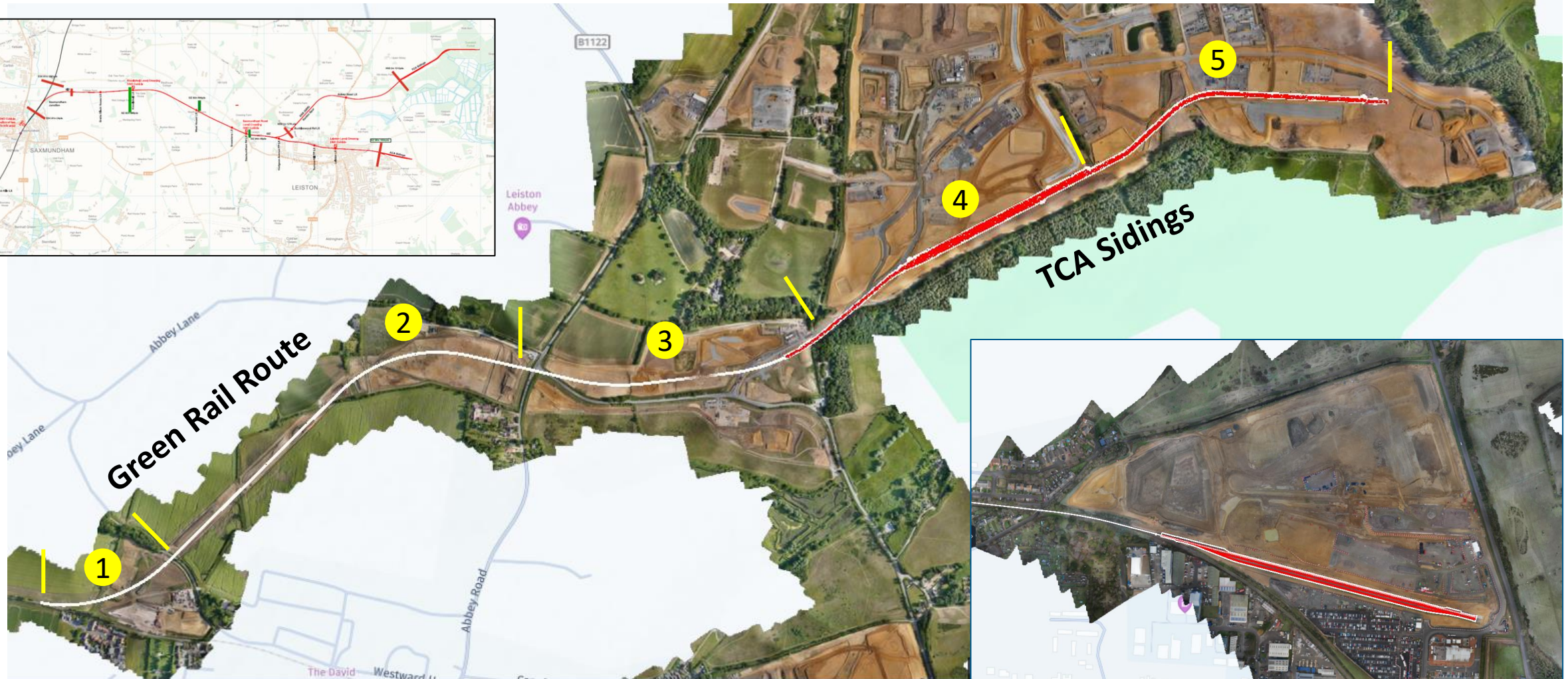
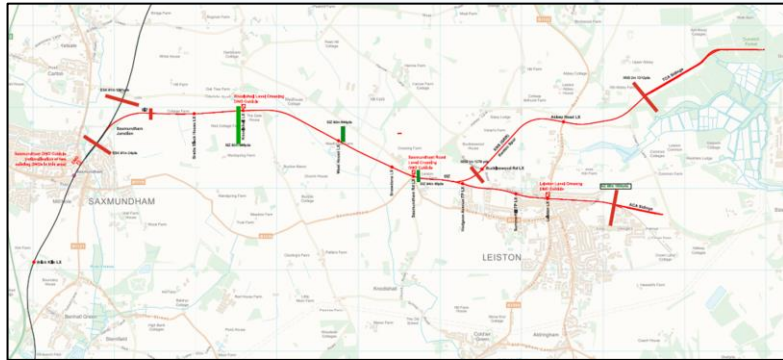
- Theberton , B1122 - Scottish Power Renewables have improved the church road junction and provided new crossing
- Yoxford ,
- A12, A1120 - Sizewell C have improved footways and provided a new signalized crossing of the A12.
- Marlesford A12 – Sizewell C will provide new footways , c1Km of the A12 resurfacing , and a new signalised crossing of the A12
- Knodishall A1094/B1069 Junction – Scottish Power Renewables will provide junction improvements and a reduced speed limit and resurfacing .



Item 3 Cont'd: Rail Update

Stephen Keighley, David Taylor

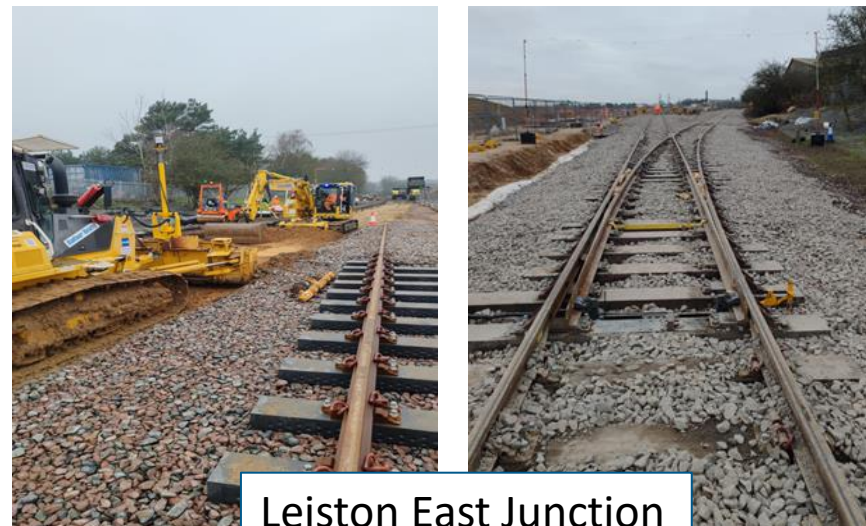
Rail Delivery – ACA/ GRR/ TCA Track





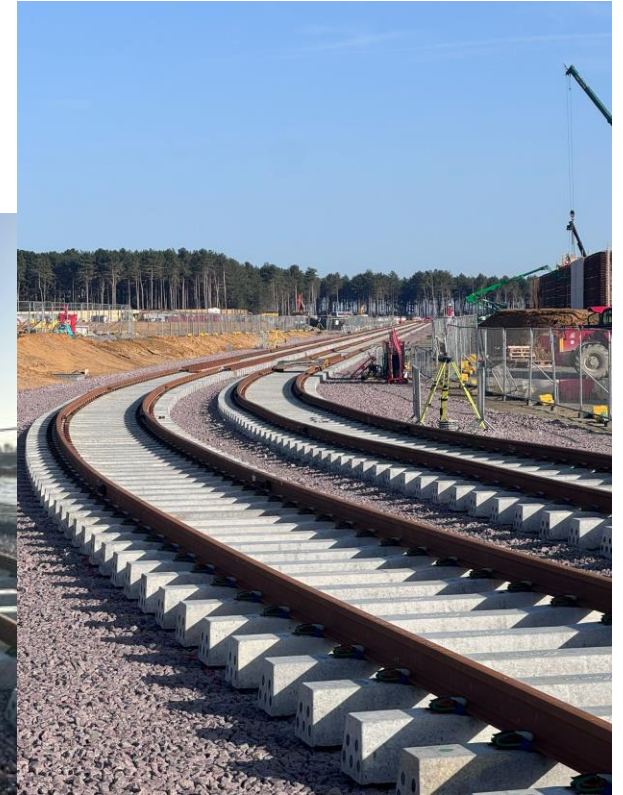
Construction of ACA Sidings

- Track construction complete
- Connection to ACA from branchline installed
- **First train entered the ACA on 23 February**
- Further engineering trains from March, for rail construction, each removing 46 HGVs from local roads



Rail Delivery – TCA Siding

- Earthworks & drainage well progressed: 75% rail corridor now handed over to rail team to enable construction of TCA sidings
- Bottom ballast 50% complete, starting from east, working west
- Track installation 20% complete, working west



Rail Delivery – Green Rail Route

- Deliveries of ballast, sleepers & track
- Earthworks nearly complete (Buckleswood area)
- Installation of drainage across Buckleswood Rd completed
- Mobilising to commence track installation, starting from branchline. Track to be loose laid



Railway possession: 23-31 May 2026:

- Network Rail to carry out heavy maintenance of junction
 - Increase resilience of existing junction in advance of full upgrade in October 2026
- Civil Engineering Works
 - Foundations for signalling equipment
 - Troughing installation





Southern Transport Forum NWR Update



East Suffolk line: March weekend engineering work



What?

- Track renewal near Saxmundham
- Woodbridge station footbridge refurbishment
- Bridge strengthening work over Rivers Deben and Alde
- Road Tarmacking works at Brick Kiln Lane level crossing
- Drainage repairs and improvements near Broomheath
- Level Crossing upgrade works at Brick Kiln Lane, Melton Sewage & Dock Lane

When?

- Saturday 7 and Sunday 8 March
- Saturday 14 and Sunday 15 March
- Saturday 21 and Sunday 22 March

Passenger service changes:

Bus replacement service will operate between Ipswich and Halesworth on the affected dates.

Photo Credit: Mike Whitby

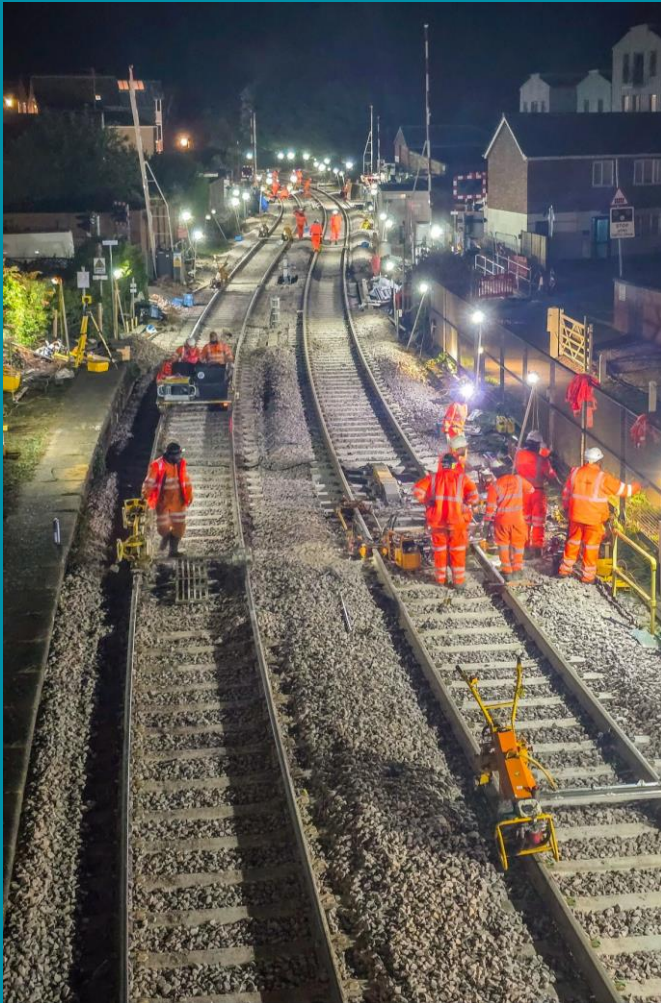
East Suffolk line: March weekend engineering work



Planned Communications:

- Press Release re rail disruption
- Press Release re road disruption
- Stakeholder correspondence: emails/briefings etc
- Line Side Neighbour notifications: letter and digital notification dropped where required
- Social media posts
- Coordinated road diversion routes for level crossing closures
- Range of local businesses contacted with the road closure information
- Emergency Services notified of road closures in coordination with the highways authority

East Suffolk line: May 9-day engineering work



What?*

- Woodbridge station – points refurb
- track maintainance – Westerfield Jct to Wickham Market
- Level crossing upgrades – Bealings and Melton Station LX
- Saxmundham Jct: track work and renewal of the junction
- Beccles Station footbridge – timber and board replacement

When?

- Saturday 23 May to 31 May 2026

Passenger service changes:

Rail replacement bus service will operate between Ipswich and Halesworth on the affected dates.

*Please note these works are subject to final approval and may be subject to change.

Photo Credit: Mike Whitby

East Suffolk line: May 9-day engineering work



Communications planned/issued:

- Press Release re rail disruption
- Press Release re road disruption
- Stakeholder correspondence: emails/briefings etc
- Line Side Neighbour notifications: letter and digital notification dropped where required
- Social media posts

Melton Level Crossing Update

Network Rail will be delivering an interim stage making minor adjustments to the signalling system in May 2026.

To deliver this work we are looking to utilise overnight road closures at Melton on 23rd-25th May and 30th May – 1st June.

Once confirmed with SCC highways we will reach out to local councillors and the public with additional details to discuss works and potential impact on the local area.

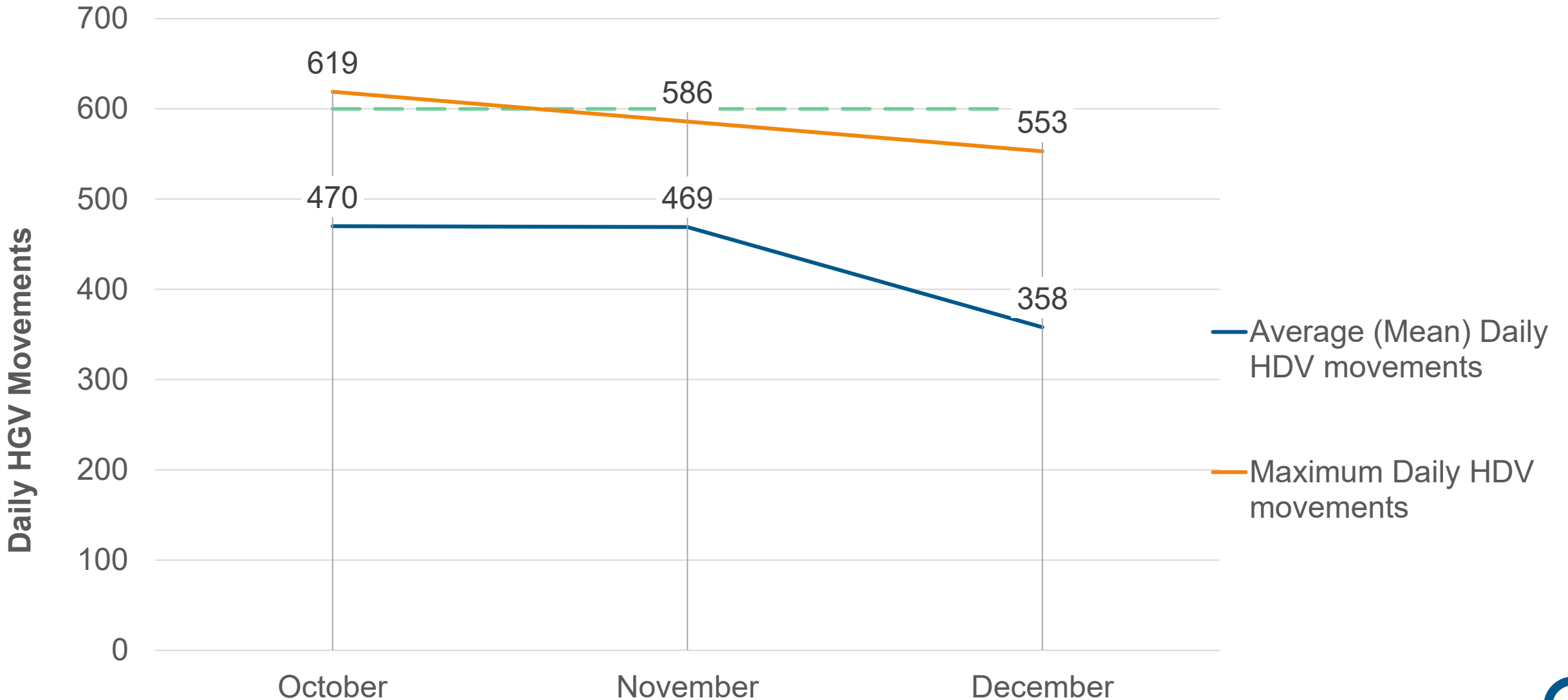


Item 4: Traffic and Transport

Rebecca Quigg, Transport Co-ordinator

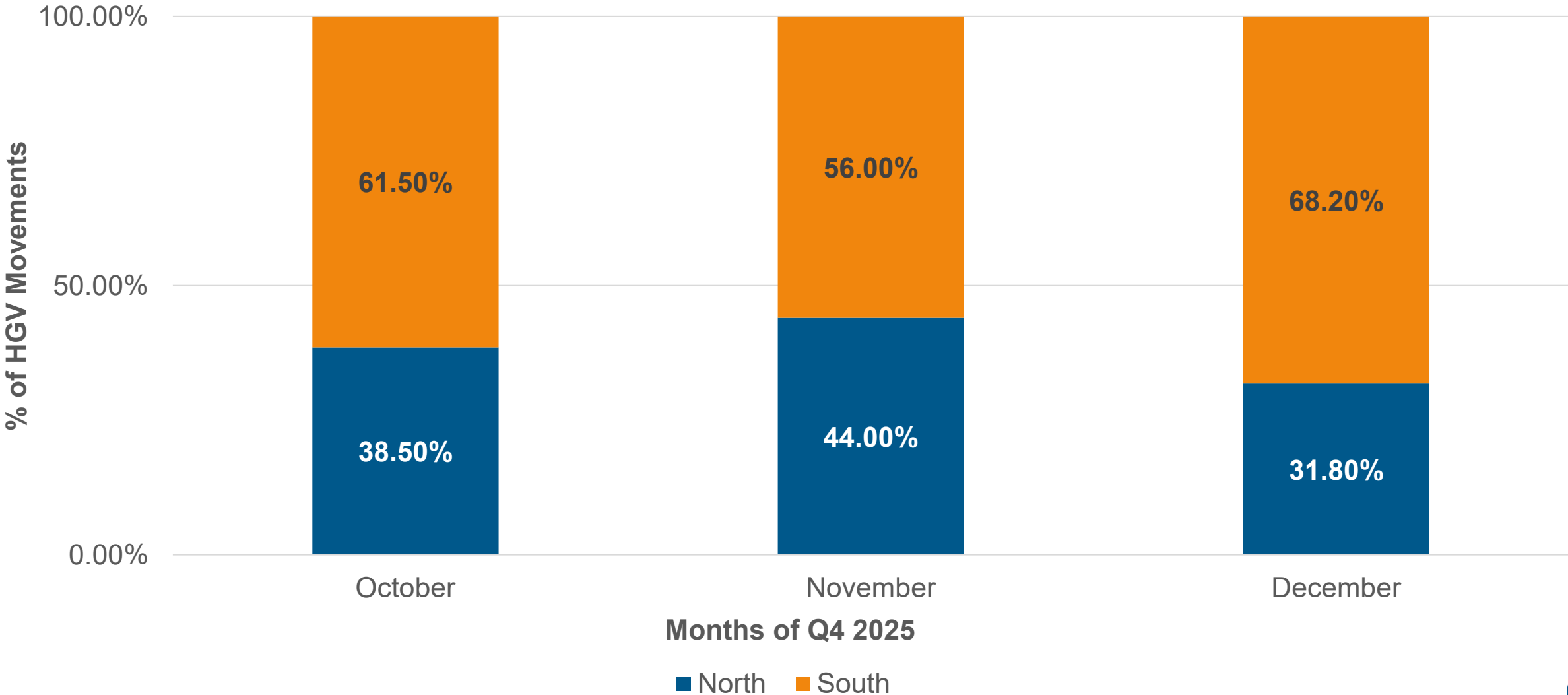
Transport Monitoring Report Q4 2025

Average (mean) and Maximum Daily HGV Movements

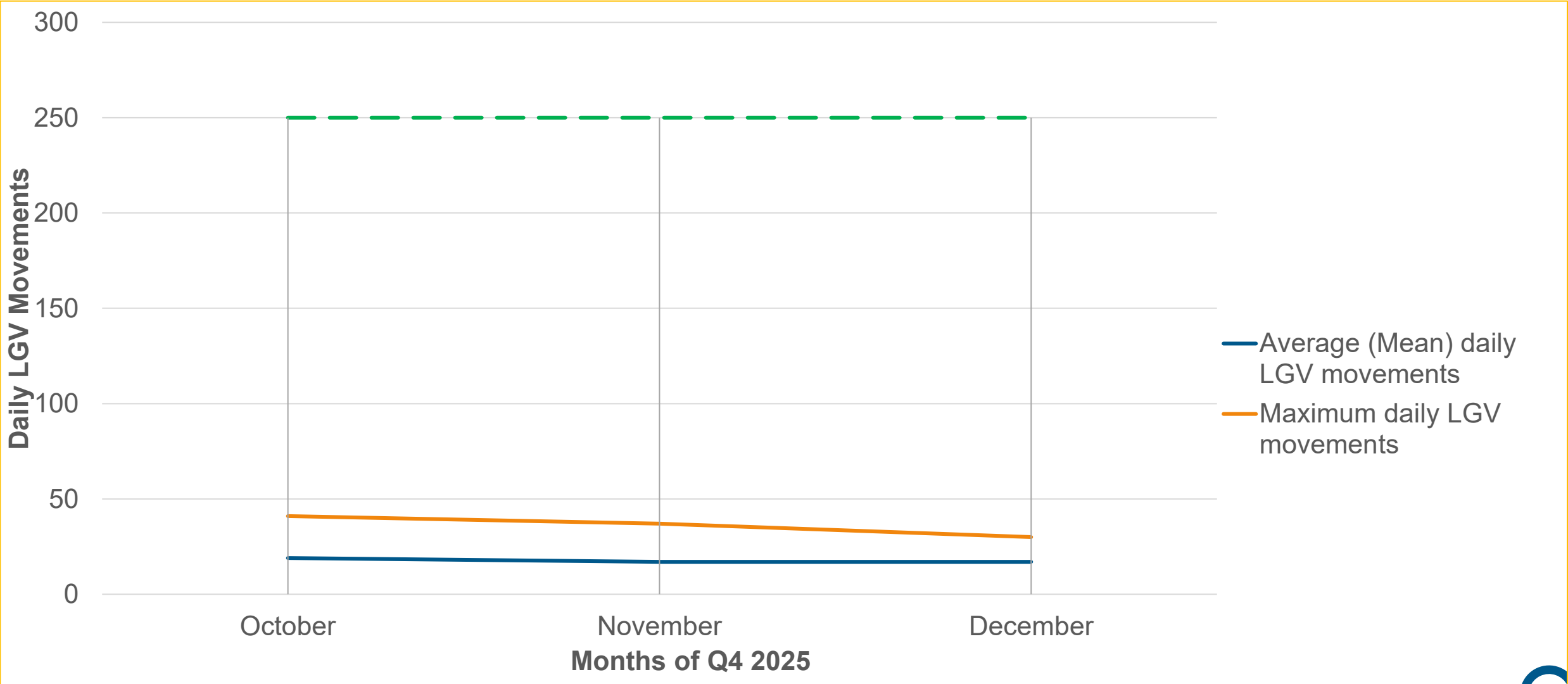


Transport Monitoring Report Q4 2025

Directional Split of HGV Movements



Average (Mean) and Maximum LGV Movements



Update

- TRG reviewed latest round of traffic monitoring and trends
- Identified points for further investigation
- Workshop with parishes to follow later in March

Key Headlines

Decisions

- Increase of bus movements as Park and Rides open
- Funding for Knodishall traffic mitigation feasibility study
- Agreement of routes and HGV limits for OSI sites
- Support for freight welfare provision at Northern Park & Ride

Discussions

- Transport Monitoring Report (Q4 2025)
- Traffic Monitoring Report (October 2025)
- Requests for traffic mitigation and monitoring opportunities

Item 5: Q&A

Via Town and Parish Council Representatives

Chair

Q1. Energy scheme construction lorries, largely to and from SZC, are breaking kerbs and the edge of roads across the area but especially on the A12. As part of the SZC community payback scheme, can SZC release funds for SCC to undertake necessary road maintenance in response?

Q2. Have Network Rail (NR) learnt the lessons of inaccurate signage and late/incomplete communications to all affected local communities around rail line and crossing closures last autumn and what pressure is SZC and SCC putting on NR to improve this poor performance in view of further planned works on the East Suffolk Line during 2026 and commencing in March?

Farnham with Stratford St Andrew Parish Council

Q1. Road verges and surfaces on local roads

There was considerable damage to the verges and road surfaces caused when the Friday Street junction was closed over a number of weekends. We realise that the damage occurred because most drivers did not follow the diversion and used sat nav instead. This includes articulated lorries as well as cars. We have been informed that the repairs are being delayed due to the wet weather. However, we would like to know the timescale for these repairs to be carried out and what plans there are for preventing this re-occurring on subsequent SZC-related closures, including when other road closures are in place?

Q2. Overnight noise

Several residents within Farnham and Stratford St. Andrew are being disturbed overnight when weekend closures take place. There is a significant amount of noise from large articulated vehicles delivering materials and when these reverse (beep alarm), as well as the sound of heavy equipment being used etc. There is also a significant amount of light pollution. This is in addition to all the daytime disruption from construction that is suffered all week. What can be done to mitigate some of this noise to allow locals to attempt to get some sleep?

Q1 The Friday Street junction has been closed and continues to be so as part of the roundabout commissioning work. While not always the designated diversion, it is clear that the B1069 through Snape village is used as an alternative. In October 2020 Snape bridge was closed to traffic, while essential repairs to the structure were undertaken. Could you reassure the PC that inspections are being completed to ensure the known structural damage is not worsening as a result of the extra and sometimes large traffic diverting through the village, please?

Woodbridge Town Council

Q1. The numerous diversions this winter, particularly due to A12 closures related to SZC, have resulted in substantial traffic flows onto minor roads with restricted widths. The volumes of traffic have led to a lot more trafficking of the haunches and verges and combined with the very wet weather, this is leading to serious issues with deep ruts in the verges and failure of haunches. How and when is the restoration of these minor roads to be addressed?

Q2. Signage of diversions has often not been inconsistent and often signs are placed blocking visibility for vehicles pulling out from junctions. How is this monitored and where there are multiple diversions can consideration be given to marking each diversion with symbols so the correct diversion is followed?

Q1. The viability of the Marlesford A12 mitigation works has recently been called into question because of an apparent reluctance on the part of Suffolk County Council councillors to approve the required reduction in speed limit through the village from 40mph to 30mph. What assurances can SZC and SCC Highways give that the works in Marlesford will be delivered in line with the proposed programme of works due to start on 5th May?

Q2. Can SZC confirm that the latest Sizewell County-wide Construction Phase Directional Signage Strategy Pack (Rev07, 4th December 2023) is the latest version that is being worked to? And, given that the Southern Park and Ride is now operational (on a “soft opening” basis) is all the directional signage detailed in the strategy now in place to control worker traffic travelling to the SP&R?

Benhall and Sternfield Parish Council

Benhall and Sternfield Parish Council would like to apologise for not being able to send a representative along to the SZC STF meeting, but yet again, cumulative impacts intervened and an unavoidable clash occurred. Being situated on the NSIP frontline, Benhall and Sternfield parish council is becoming increasingly concerned that the adverse impacts of such an unprecedented number of NSIPs being developed or proposed for development at the same time in the same small geographical area are becoming overwhelming.

Cumulative Impacts arising from such concentrated infrastructure development are affecting our daily lives in every way from pot holes and extended journey times to struggling with our mental health and wellbeing and the parish council would therefore like to ask the SZC Team to address the possibility that the community is already beginning to flounder here and assist us with getting our concerns aired with the other Developers at the highest level please.

Campsea Ashe Parish Council

Q1. The recent A12 closures and the subsequent diversions have put high strain on smaller roads and lanes. As a result, many of them now exhibit unsafe verges, for example dangerous drops from tarmac to ground.
Are there any plans to address this?

Q2. With regards to A12 closures and the signposted diversions;
How aware is SzC and SCC about drivers avoiding those advertised routes and choosing instead alternative and often unsuitable routes, that have difficulties coping with such level of volumes?

Q1. The note from Network Rail recently shared via SZC with members of the Southern Transport Forum (following action 4.06 of the notes of the meeting of 4 Dec 2025) appears to summarise Network Rail's internal communications review of the major blockade of the East Suffolk Line last autumn and suggests the review has been completed.

Q2. Why did the review not seek to collaboratively cover the wider operational aspects from a Highways Authority or community impact perspective, thus suggesting that the Network Rail review was finalised without any discussion with the Suffolk County Council Network Assurance team and affected communities represented by Woodbridge TC, Melton PC and Ufford PC?

Forum Schedule

2026

Our forums are open to local people to attend as observers – and they're another great way for you to hear about our latest work.

All forum timings: 18:00–20:00 (arrival from 17:45)

Leiston Town Athletic Association,
Victory Road, Leiston, IP16 4DQ

High Lodge Darsham,
Haw Wood, Hinton, Nr Darsham, IP17 3QT

Stratford St Andrew Riverside Centre,
6 Great Glemham Road, Stratford St Andrew, Saxmundham, IP17 1LL

Sizewell Sports and Social Club
King Georges Avenue, Leiston IP16 4JX.

Main Development Site Forum	Wednesday 14 January 2026	Leiston Town Athletic Association
Northern Transport Forum	Wednesday 4 February 2026	High Lodge Darsham
Southern Transport Forum	Wednesday 4 March 2026	Stratford St Andrew Riverside Centre
Community Forum	Thursday 19 March 2026	Sizewell Sports and Social Club
Main Development Site Forum	Wednesday 15 April 2026	Leiston Town Athletic Association
Northern Transport Forum	Wednesday 6 May 2026	High Lodge Darsham
Southern Transport Forum	Wednesday 3 June 2026	Stratford St Andrew Riverside Centre
Main Development Site Forum	Wednesday 8 July 2026	Leiston Town Athletic Association
Northern Transport Forum	Wednesday 5 August 2026	High Lodge Darsham
Southern Transport Forum	Wednesday 2 September 2026	Stratford St Andrew Riverside Centre
Main Development Site Forum	Wednesday 7 October 2026	Leiston Town Athletic Association
Community Forum	Thursday 22 October 2026	Sizewell Visitors Centre
Northern Transport Forum	Wednesday 4 November 2026	High Lodge Darsham
Southern Transport Forum	Wednesday 2 December 2026	Stratford St Andrew Riverside Centre

Sizewell C
The power of **good** for Britain

Thank you

